

ZHB-NPT/NPT

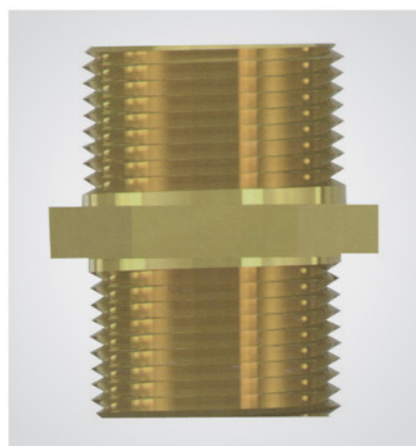
转换头

adapter substitute

附件

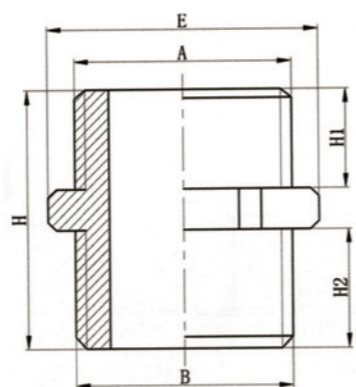
金属锁紧螺母-公制螺纹

Locking nut



材质 黄铜、黄铜镀镍或不锈钢 (订货时请指明)
Material Brass, Nickel-plated brass, stainless steel (When ordering, please specify)

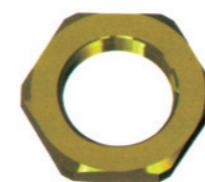
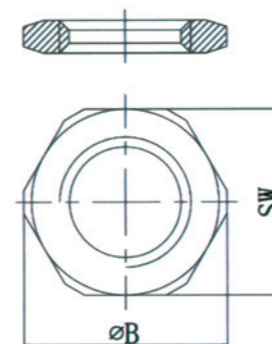
特点 适用于需螺纹转换的场所
Features Suitable for thread conversion place



订购示例 (e.g.): ZHB-NPT3/4/NPT3/4

单位:mm

螺纹及规格 Size and thread	H1	H2	E
ZHB-NPT1/2/NPT1/2	20	20	28
ZHB-NPT1/2/NPT3/4	20	20.2	35
ZHB-NPT3/4/NPT3/4	20.2	20.2	35
ZHB-NPT1/NPT1	25.1	25.1	42
ZHB-NPT1/NPT3/4	25.1	20.2	42
ZHB-NPT11/4/NPT11/4	25.7	25.7	52
ZHB-NPT11/4/NPT11/2	25.7	26.1	58
ZHB-NPT11/2/NPT11/2	26.1	26.1	58
ZHB-NPT2/NPT11/2	26.9	26.1	75
ZHB-NPT2/NPT2	26.9	26.9	75



材质 黄铜、黄铜镀镍或不锈钢 (订货时请指明)
Material Brass, brass nickel plated or stainless steel (When ordering, please specify)



规格型号 Gland size	SW	B
JS-M12 × 1.5	16	17.5
JS-M16 × 1.5	20	22.0
JS-M20 × 1.5	24	26.0
JS-M25 × 1.5	30	33.0
JS-M32 × 1.5	38	42.0
JS-M40 × 1.5	45	50.0
JS-M50 × 1.5	55	62.0
JS-M63 × 1.5	70	78.0
JS-M75 × 1.5	85	95.0
JS-M80 × 1.5	90	100.0
JS-M90 × 2	100	110.0
JS-M100 × 2	110	124.0

金属锁紧螺母-PG德制螺纹

Locking nut

材质 黄铜、黄铜镀镍或不锈钢 (订货时请指明)
Material Brass, brass nickel plated or stainless steel (When ordering, please specify)



规格型号 Gland size	SW	B
JS-PG7	16	17.5
JS-PG9	20	22.0
JS-PG11	22	24.0
JS-PG13.5	24	26.0
JS-PG16	27	30.0
JS-PG21	32	35.0
JS-PG29	42	46.0
JS-PG36	52	57.0
JS-PG42	60	66.0
JS-PG48	65	72.0

