

## TBJ-隔爆·NPT外螺纹小/内螺纹大

防爆变径接头

reducer union

## TDT-隔爆/增安·公制/NPT

防爆堵头

Plug

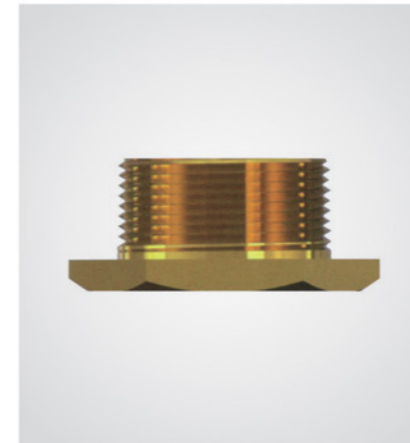


<b>材质</b> Material	黄铜、黄铜镀镍或不锈钢 (订货时请指明) Brass, brass nickel plated or stainless steel (When ordering, please specify)
<b>特点</b> Features	适用于螺纹转换或需变径的场所 Suitable for thread conversion or reducing place
<b>防爆标志</b> Ex mark	ExdII C Gb
<b>工作温度</b> COT	-60°C ~ 100°C



1、可选附件：锁紧螺母、O型圈、平垫圈、锯齿圈、接地片

1、Optional accessories: reducer union ; lock nut, O Ring, flat washer, serrated washers, sheath, grounding

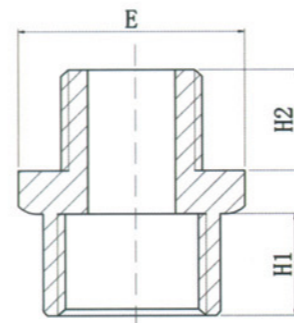
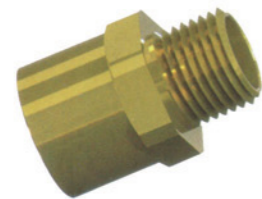


<b>材质</b> Material	黄铜、黄铜镀镍或不锈钢 (订货时请指明) Brass, brass nickel plated or stainless steel (When ordering, please specify)
<b>特点</b> Features	对电气设备的预留孔密封以便备用 The reserved hole of electrical equipment sealed to spare
<b>防爆标志</b> Ex mark	ExdII C Gb
<b>工作温度</b> COT	-60°C ~ 100°C



1、可选附件：锁紧螺母、O型圈、平垫圈、锯齿圈、接地片

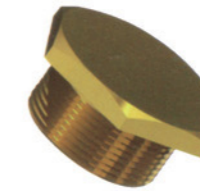
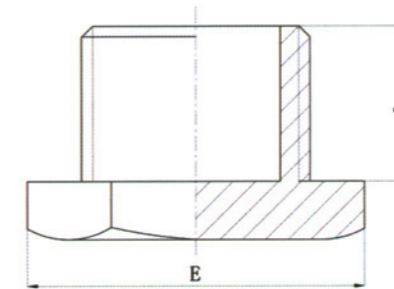
1、Optional accessories: reducer union ; lock nut, O Ring, flat washer, serrated washers, sheath, grounding



订购示例 (eg) : TBJ-NPT1/2/NPT3/4

单位:mm

规格型号 Gland size	外螺纹 external thread	内螺纹 internal thread	H1	H2	E
TBJ-NPT3/8/NPT1/4	NPT1/4	NPT3/8	15.1	15.3	26
TBJ-NPT1/2/NPT3/8	NPT3/8	NPT1/2	15.3	20	30
TBJ-NPT3/4/NPT1/2	NPT1/2	NPT3/4	20	20.2	35
TBJ-NPT1/NPT1/2	NPT1/2	NPT1	20	25.1	44
TBJ-NPT1/NPT3/4	NPT3/4	NPT1	20.2	25.1	44
TBJ-NPT1-1/NPT3/4	NPT3/4	NPT1-1/4	20.2	25.7	58
TBJ-NPT1-1/4/NPT1	NPT1	NPT1-1/4	25.1	25.7	58
TBJ-NPT1-1/2/NPT1	NPT1	NPT1-1/2	25.1	26.1	69
TBJ-NPT1-1/2/NPT1-1/4	NPT1/4	NPT1-1/2	25.7	26.1	69
TBJ-NPT2/NPT1-1/4	NPT1/4	NPT2	25.7	26.9	81
TBJ-NPT2/NPT1-1/2	NPT1/2	NPT2	26.1	26.9	81
TBJ-NPT2-1/2/NPT1-1/2	NPT1/2	NPT2-1/2	26.1	40.1	98



订购示例 (eg) : TDT-M20 × 1.5

单位:mm

规格型号 Gland size	L(公制螺纹M) L (metric thread M)	L(NPT)	E
TDT-M16 × 1.5 或 TDT-NPT3/8	15	15.3	26
TDT-M20 × 1.5 或 TDT-NPT1/2	15	20	30
TDT-M25 × 1.5 或 TDT-NPT3/4	15	20.2	35
TDT-M32 × 1.5 或 TDT-NPT1	15	25.1	44
TDT-M40 × 1.5 或 TDT-NPT1/4	15	25.7	58
TDT-M50 × 1.5 或 TDT-NPT1/2	15	26.1	69
TDT-M63 × 1.5 或 TDT-NPT2	15	26.9	81
TDT-M75 × 1.5 或 TDT-NPT1/2	15	40.1	98
TDT-M80 × 1.5 或 TDT-NPT3	15	41.6	104
TDT-M90 × 1.5 或 TDT-NPT1/2	20	42.8	116
TDT-M100 × 1.5 或 TDT-NPT4	20	44	127